

Zeytinn
Hotel

2024
SUSTAINABILITY
REPORT



Content



1. About the Report
2. Facility Overview and Features
3. Sustainability Team
4. Reducing Environmental Impacts
5. Staff and Working Life
6. Social Activities and Initiatives
7. Cultural Activities
8. Data





About the Report

As of 2024, we continue our sustainability efforts with determination. In this process, we aim to share the progress we have achieved with all our stakeholders—from our management and employees to our guests and suppliers—and to reach our common goals by increasing awareness.

This report includes the environmental, social, and economic sustainability activities we carried out throughout 2024. Our business operates in line with the principles of locality and naturality, progressing towards the goals we have set in areas such as waste management and the reduction of electricity and water consumption. In addition, we continue to further support and strengthen our policies related to women and children.



Facility Overview and Features



Zeyt Inn Hotel has a capacity of 15 rooms and 30 beds and is located in the Eski Datça Neighborhood, one of Datça's most important cultural destinations. Our facility offers 11 standard double rooms, 3 triple rooms, and 1 suite room. For our guests, there is a 50-person dining hall, a 20-person outdoor dining area, and an outdoor swimming pool.

Zeyt Inn Hotel is set in a spacious garden surrounded by olive trees and combines traditional Turkish hospitality with modern comfort. Designed in harmony with the authentic stone architecture of Eski Datça, it offers guests a unique experience that reflects the region's distinctive character. Our hotel is located just 3 km from the Blue Flag awarded Hastanealtı Beach in İskele Neighborhood, making it an ideal accommodation choice for sea lovers.



Our rooms are equipped with amenities such as air conditioning, LCD television, minibar, safe, and free Wi-Fi to meet all the needs of our guests. Guests can choose from a variety of accommodation options including Standard Double rooms with French balconies or verandas, spacious Triple rooms with garden views, Suite Deluxe rooms consisting of two separate sections, and our iconic Stone Rooms. These rooms are thoughtfully designed in harmony with Datça's rich natural surroundings, offering guests a unique and memorable holiday experience.

With our commitment to sustainable tourism, various measures are implemented in our hotel to conserve water and energy. Features such as aerator-equipped faucets, energy-efficient air conditioning systems, and double-glazed windows help us minimize our environmental impact. Our hotel also places great importance on waste recycling and manages this process in cooperation with the municipality and licensed companies. Additionally, the olive oil produced from the olive trees in our garden and the jams prepared with local ingredients offer our guests a natural and authentic taste experience.



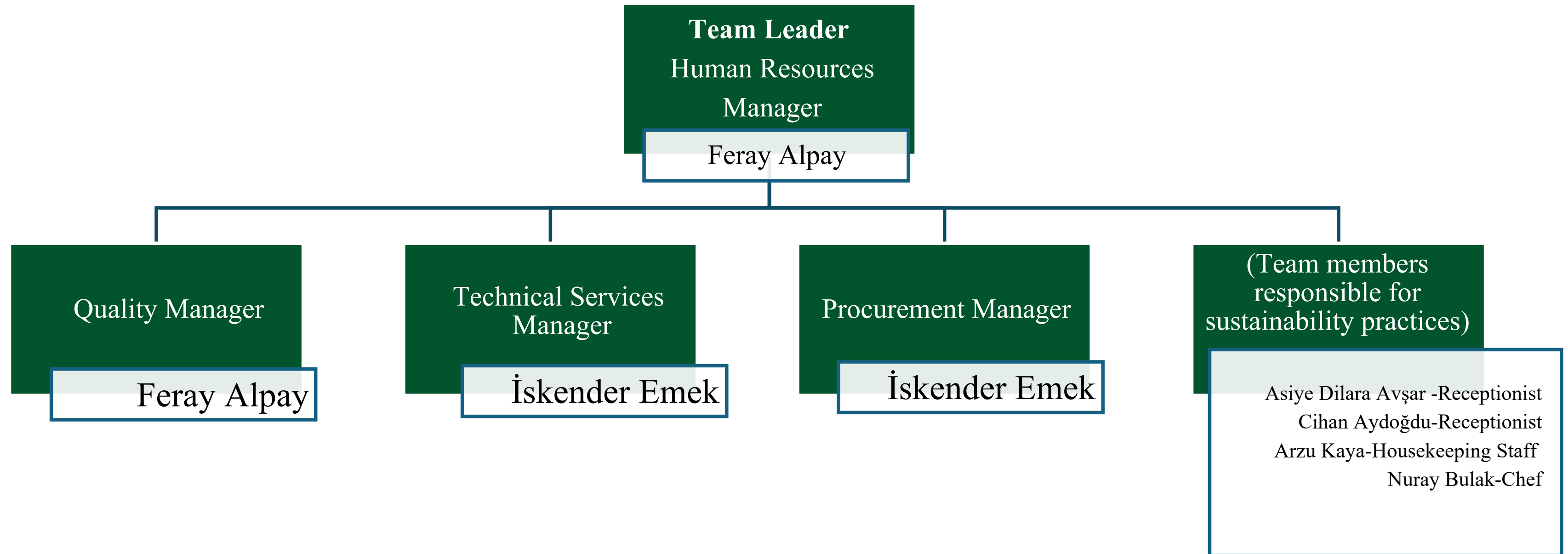
Zeytinn
Hotel



Zeyt Inn Hotel is certified by the Ministry of Culture and Tourism with the “Special Accommodation Facility Certificate.” This certification is an official recognition of the unique comfort and high-quality service our property offers. Our guests can experience the enchanting atmosphere of Eski Datça through this authentic yet modern accommodation concept, enjoying a peaceful holiday immersed in history and nature.



Sustainability Team



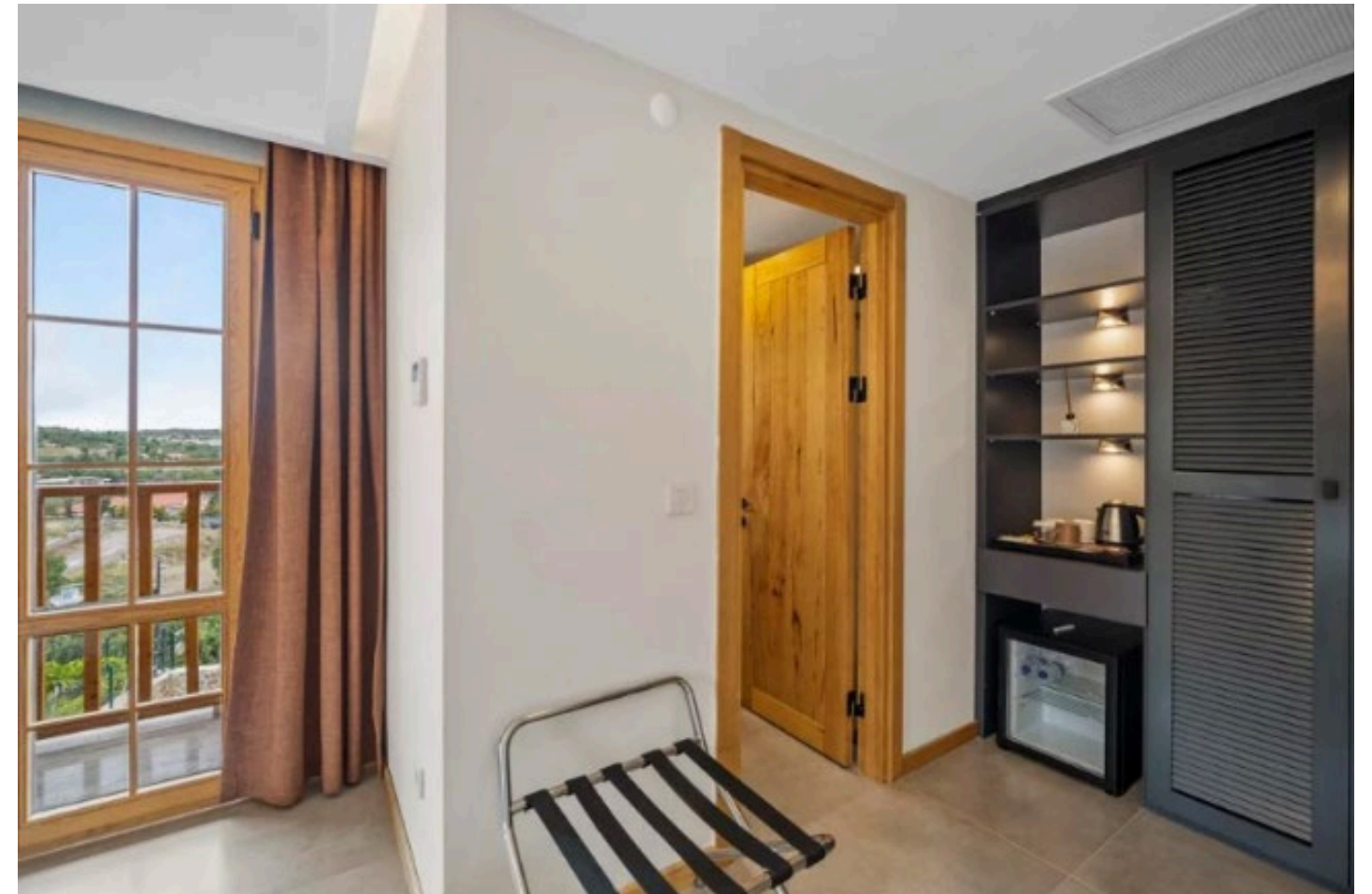


Reducing Environmental Impact

As Zeyt Inn Hotel, we implement various practices in line with our goal of reducing our environmental impact and operating in harmony with nature:

Structural Design and Material Use

- Environmentally friendly solid wood materials have been preferred throughout the entire architectural design. The window frames are made of laminated solid wood, and energy efficiency is ensured through the use of double glazing. Solid cedar wood has been used for balconies, garden areas, and stair railings, reflecting our commitment to sustainable building materials.





Energy Efficiency and Heating-Cooling Systems

Hot Water Heating: Hot water demand is met using an energy-efficient air source heat pump, minimizing energy consumption.

Heating and Cooling Systems: The heating and cooling needs of the rooms and restaurant are provided by high energy-efficiency Daikin VRV central air conditioning systems.

Lighting Systems: Energy-saving LED lighting is used in all rooms and common areas. Staircase and corridor lighting are timer-controlled to prevent unnecessary energy consumption.

Energy Control Systems: In our rooms, energy use is managed through key card systems, automatically cutting off electricity when the guest is not in the room.





Water Conservation and Usage

In all our rooms, as well as in the kitchen and bar, faucets and showerheads are equipped with aerator technology, which reduces water flow by mixing water with air and breaking it into finer droplets. This ensures significant water savings.

Energy-Efficient Kitchen and Equipment Use

Kitchen Equipment: In our hotel kitchen, energy-saving convection ovens, industrial refrigerators, and deep freezers are used. The industrial dishwashers in both the kitchen and bar are designed with separate energy-efficient systems for plates and glassware.

Pool Disinfection: Our main pool and children's pool are disinfected using a salt generator system to minimize the use of excessive chemicals and chlorine. This method preserves the natural balance of the water and provides an environmentally friendly alternative.



Waste Management and Recycling Practices

Waste Management: To facilitate waste management within our facility, separated waste bins are used. We hold a Zero Waste Certificate, and waste recycling is carried out in cooperation with the municipality and licensed waste disposal companies.

Waste Oil Management: Waste oils generated in our hotel are collected separately and delivered to licensed companies to prevent environmental harm.

Use of Natural and Local Products

Products from Our Garden: Olives harvested from centuries-old, protected olive trees—brought from Harran and located in our hotel garden—along with the olive oil produced from these olives, as well as jams made from various local ingredients, are served to our guests in our restaurant.

Chemical-Free Farming Practices: Aware of the environmental harm caused by uncontrolled use of chemicals, we practice natural, chemical-free farming in our garden, and these products are used in our kitchen.

Fresh and Local Food Supply: To prevent food waste, the products we purchase are sourced weekly without stockpiling. These items, supplied by local producers, are served fresh while also supporting the local economy.





Staff and Working Life

As Zeyt Inn Hotel, we prioritize protecting the rights of our employees and enhancing their well-being. We have adopted various policies to ensure better working conditions and to create a sustainable working environment for our staff:

Social Security and Training

Social Security: We ensure that all our employees are covered by social security insurance. This is one of the fundamental principles of our organization.

Occupational Health and Safety (OHS) Trainings: In line with our legal responsibilities, OHS training is provided regularly to protect the health of our employees. In addition, social security obligations and other mandatory trainings are delivered in full.

Professional Development Trainings: We organize various professional development programs to enhance the skills and knowledge of our staff. Through these programs, both workplace efficiency and personal development are supported.

Working Conditions and Support

Uniforms and Workwear: All our staff are provided with comfortable and safety-compliant uniforms. This ensures both employee comfort and a professional appearance within the workplace.

Overtime and Compensation: Overtime hours are carefully monitored, and in cases of extra work, our employees are granted additional pay or compensatory leave accordingly.



Women and Children Policies

Gender Equality and Equal Opportunities: We are strongly committed to the principle of gender equality in our recruitment processes. To support the participation of women in working life, we ensure equal opportunities and strive to maintain a balanced workforce by prioritizing the employment of female staff.

Family-Friendly Working Environment: Within the framework of our women and children policies, we provide the necessary flexibility to help our employees balance their work and family lives. In this way, we particularly support employees with children in maintaining a healthy work–life balance.

Employee Satisfaction and Long-Term Employment

We offer various social benefits and opportunities to ensure long-term employment and enhance the satisfaction of our employees. Improving the working environment, enabling our staff to work in a peaceful atmosphere, and strengthening their sense of loyalty are among our main priorities.



Social Activities and Initiatives

Our facility continues its commitment to supporting the local culture and economy based on the principle of sustainability. In this regard, various steps are taken within the scope of social responsibility:

Local Procurement and Regional Development

By collaborating with local suppliers in Datça, we support regional development. We prioritize local sources in our procurement processes, thereby contributing both to the local economy and to the preservation of local culture.

Employment and Training Policies

Priority for Local Employment: In our recruitment processes, we prioritize offering job opportunities to individuals living in Datça. In this way, we support local employment and contribute to the economic development of the local community.

Training and Professional Development: To ensure that our employees remain with us long-term and continue to enhance their knowledge and skills, we meet their training needs and support their participation in professional development programs. These trainings help our staff become more aware and competent in sustainability and customer satisfaction.

Cultural and Social Activities

Music and Event Organization: On selected days, live music performances are organized for our guests, allowing them to enjoy their time through cultural activities. In this way, we offer our guests the opportunity to experience the rich cultural heritage of Datça more closely.

Guidance Services and Local Promotion: Upon request, we provide our guests with guidance services such as boat tours, walking tours, and introductions to the surrounding historical and natural attractions. We also inform our guests about local cuisine and offer them the opportunity to experience the region's most authentic flavors.

Sports and Activity Opportunities

Outdoor Swimming Pool and Sports Activities: Our outdoor swimming pool provides guests with a relaxing environment where they can exercise and unwind during their stay. In addition, our guests have the opportunity to rejuvenate both physically and mentally through various activities organized at our facility.





Accessibility and Inclusive Living

Accessible Design: We place great importance on accessibility. Our facility includes accessible ramps in Blocks A and B, and necessary arrangements have been made to ensure that every individual can easily spend time in our property. We are committed to providing an accessible accommodation experience for everyone and aim to ensure the comfort of all our guests.

Cultural Activities

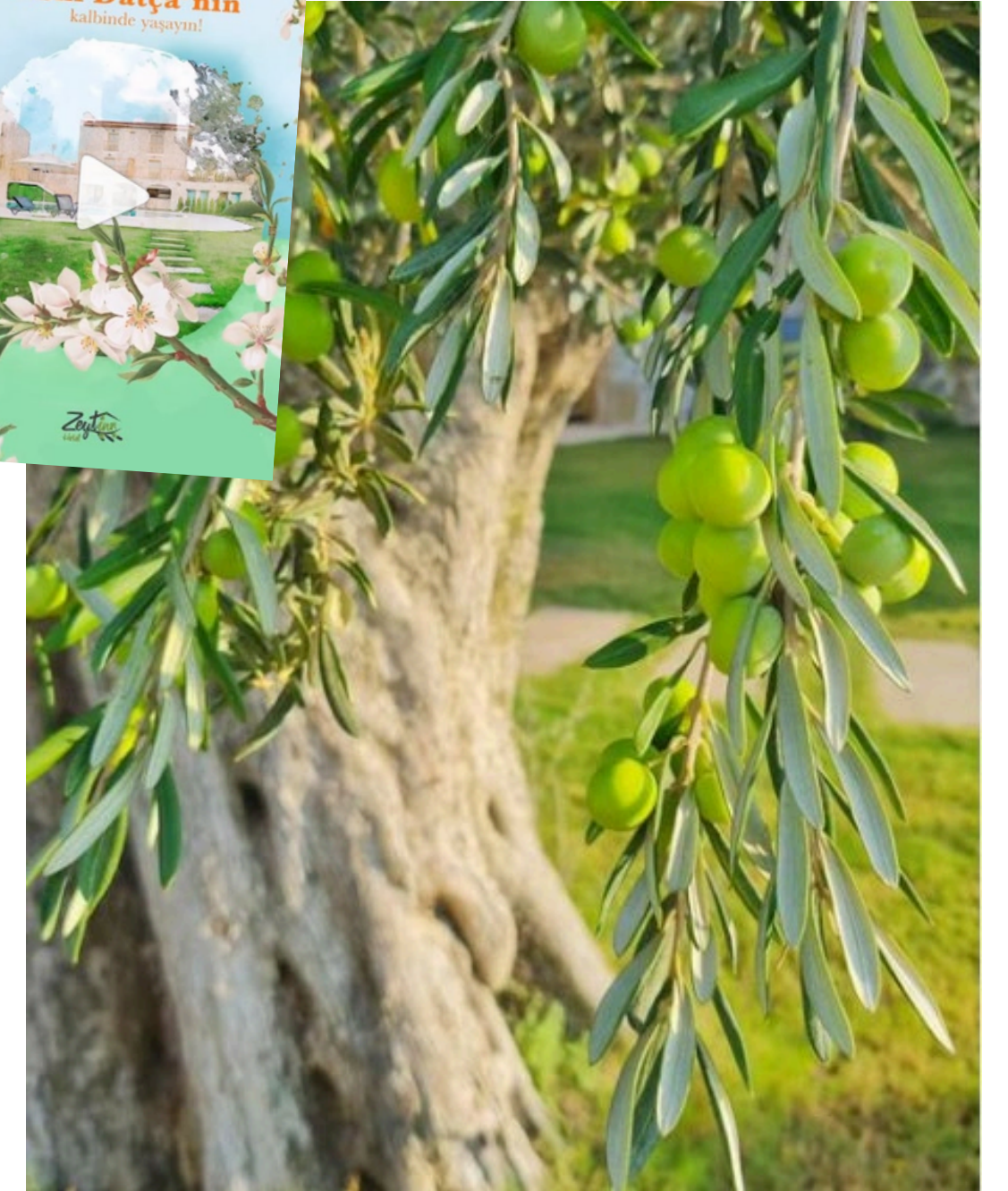
As Zeyt Inn Hotel, our facility has been built in harmony with the natural and cultural character of Datça. Designed in line with the historical heritage of Eski Datça, our hotel features traditional stone architecture, offering guests a unique and authentic atmosphere. During the construction process, local building materials were used to create a structure that is respectful to both the environment and the region's cultural identity.

Participation in and Support for Regional Events

Our facility actively participates in local events such as the Almond Blossom Festival, Winter Swimming Marathon, and Motofest Datça. By hosting visitors during these festivals, we support Datça's cultural life and provide our guests with the opportunity to experience these unique events.

Garden and Local Production

Our garden features plants and fruit trees native to the Aegean and Mediterranean climates. Equipped with local tree varieties such as olive, pomegranate, fig, and lemon, our garden offers guests a natural and serene environment. The jams, olives, and olive oils we produce are part of our natural production process, and we serve these fresh and healthy products to our guests in our restaurant.





Presentation of Local Flavors

In our restaurant, we offer olive oil-based dishes, a variety of appetizers, fresh salads, meat menus, and flavors unique to Datça, all prepared with ingredients sourced from local producers. We provide our guests with a rich culinary experience crafted by skilled hands, while taking care to promote the local cuisine. Seasonal products of Datça, such as green almonds and almonds, are also served to our guests.

Information and Promotion Corner

Our hotel features an information corner that provides guidance on places to visit in Datça and its surroundings. We offer our guests insights into popular attractions such as the Ancient City of Knidos, Palamutbükü, Hayıtbükü, Kumluk Beach, and the streets of Eski Datça, helping them explore the historical and cultural heritage of the region.

This corner, reflecting the natural beauty and cultural values of Datça, allows our guests to experience the spirit of the region more deeply.

(See: <https://zeytinn.com.tr/datca-gezi-rehberi/>)






Data

Throughout 2024, the data obtained regarding Zeyt Inn Hotel’s energy consumption, water usage, and waste management provide valuable insights guiding our sustainability goals.

Electricity Consumption:


	ELECTRICITY CONSUMPTION MONITORING TABLE											
	Doc. No: Sys.ZH.Fr.34											
	Pub. Date: 15.08.2025											
	Rev. No:											
	Rev. Date:											
Criteria: D1.3												
Electricity Consumption Areas (kWh) <small>(Electricity consumption values can be obtained from invoices and meters.)</small>	January	February	March	April	May	June	July	August	September	October	November	December
Monthly Electricity Consumption (kWh)	2785,061	21750,31	5762,198	5723,499	6045,471	6732,588	10351,633	11898,621	10582,512	6311,024	5688,179	5524,978
<i>Electricity Consumption per Guest per Night (kWh/Guest-Night)</i>	696,27	244,39	106,71	32,15	36,42	18,91	17,73	13,24	24,84	103,46	196,14	2762,49
ANNUAL AVERAGE	354,39											

High Consumption Periods: Significant increases in electricity consumption were observed, particularly during the summer months, due to the rise in tourism activities. In July, electricity consumption reached 10,531.63 kWh, one of the highest levels of the year. In August, this figure was recorded as 11,898.61 kWh.

Consumption per Guest: The average electricity consumption per guest varies depending on occupancy levels. During the summer months, the average consumption per guest was calculated to be between 36–103 kWh.



Water Consumption:


	WATER CONSUMPTION MONITORING TABLE												
												Doc. No:	Sys.ZH.Fr.35
												Pub. Date:	15.08.2025
												Rev. No:	
												Rev. Date:	
											Criteria:	D1.4	
Water Usage Sources (cubic meters) <small>(Water usage amounts can be obtained from invoices and meters.)</small>	January	February	March	April	May	June	July	August	September	October	November	December	
Total Monthly Water Consumption (m³)	32	50	48	115	157	188	246	211	256	209	81	48	
Water Consumption per Guest per Night (m³/Guest-Night)	8,00	0,56	0,89	0,65	0,95	0,53	0,42	0,23	0,60	3,43	2,79	24,00	
ANNUAL AVERAGE	3,59												

Annual Water Usage: At our facility, water consumption is particularly concentrated during the summer season. In July, water usage reached 246 m³, indicating a higher demand for water during the summer months.

Water Consumption per Guest: Throughout the year, water consumption per guest varies seasonally. The highest consumption was recorded in September, with 3.43 m³ per guest.



Waste Management

	WASTE MONITORING TABLE												Doc. No	Sys.ZH.Fr.24
													Pub Date	15.08.2025
													Rev. No.	
													Rev. Date	
													Criteria:	D2.4
Waste Types (kg) (Monthly waste amounts will be recorded in the table by the facility authority according to waste types.)	January	February	March	April	May	June	July	August	September	October	November	December		
Total Monthly Solid Waste (kg)	5	11	12	21	28	49	120	134	57	21	14	8		
Waste Generated per Guest per Night (kg Waste/Guest-Night)	1,25	0,12	0,22	0,12	0,17	0,14	0,21	0,15	0,13	0,34	0,48	4,00		
ANNUAL AVERAGE (kg Waste/Guest-Night)	0,61													

Solid Waste Amount: The amount of waste varies on a monthly basis. In July and August, with the increase in the number of guests, the total amount of solid waste was recorded as 98 kg and 51 kg, respectively.

Recycling: Different types of waste such as paper, plastic, metal, and glass are collected separately and recycled. It has been observed that paper and glass waste, in particular, accumulate more intensively during the summer period.



Carbon Footprint – 2024

As a result of the carbon footprint calculations for 2024, it has been determined that Zeyt Inn Hotel generated a total of 48.40 tCO₂e (tons of carbon dioxide equivalent) emissions throughout the year. This figure includes greenhouse gas emissions arising from the hotel's electricity consumption, water usage, and other operational activities.

Based on the total number of guest-nights used in the calculations, the carbon footprint per guest was calculated as 16.99 kgCO₂e.

These results not only reveal the environmental impact of the facility but also indicate areas for improvement, such as energy efficiency, the use of renewable energy, waste management, and water conservation to reduce carbon emissions. Zeyt Inn Hotel aims to further strengthen its carbon reduction strategies in the coming periods to lower these values even further.

